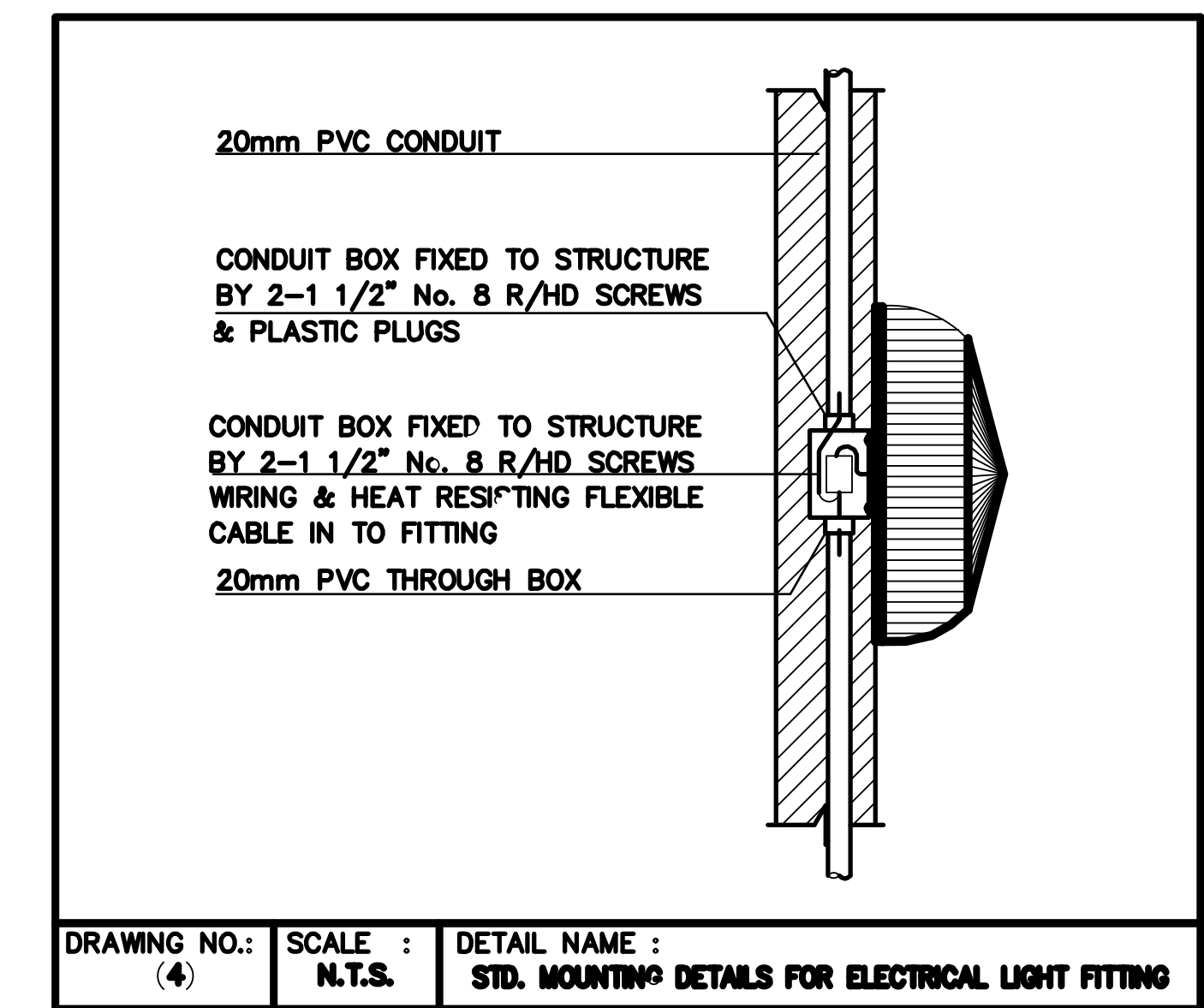
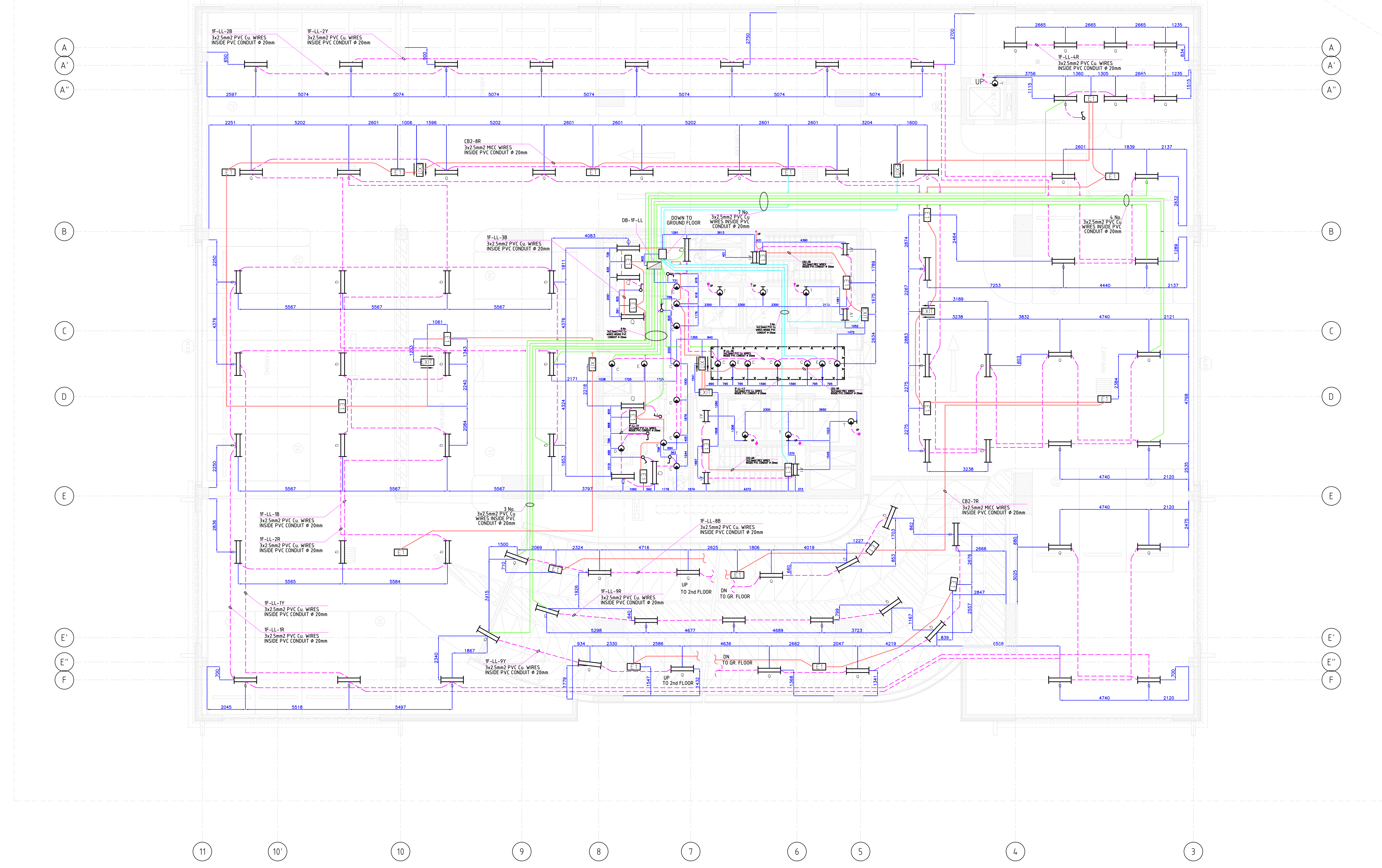
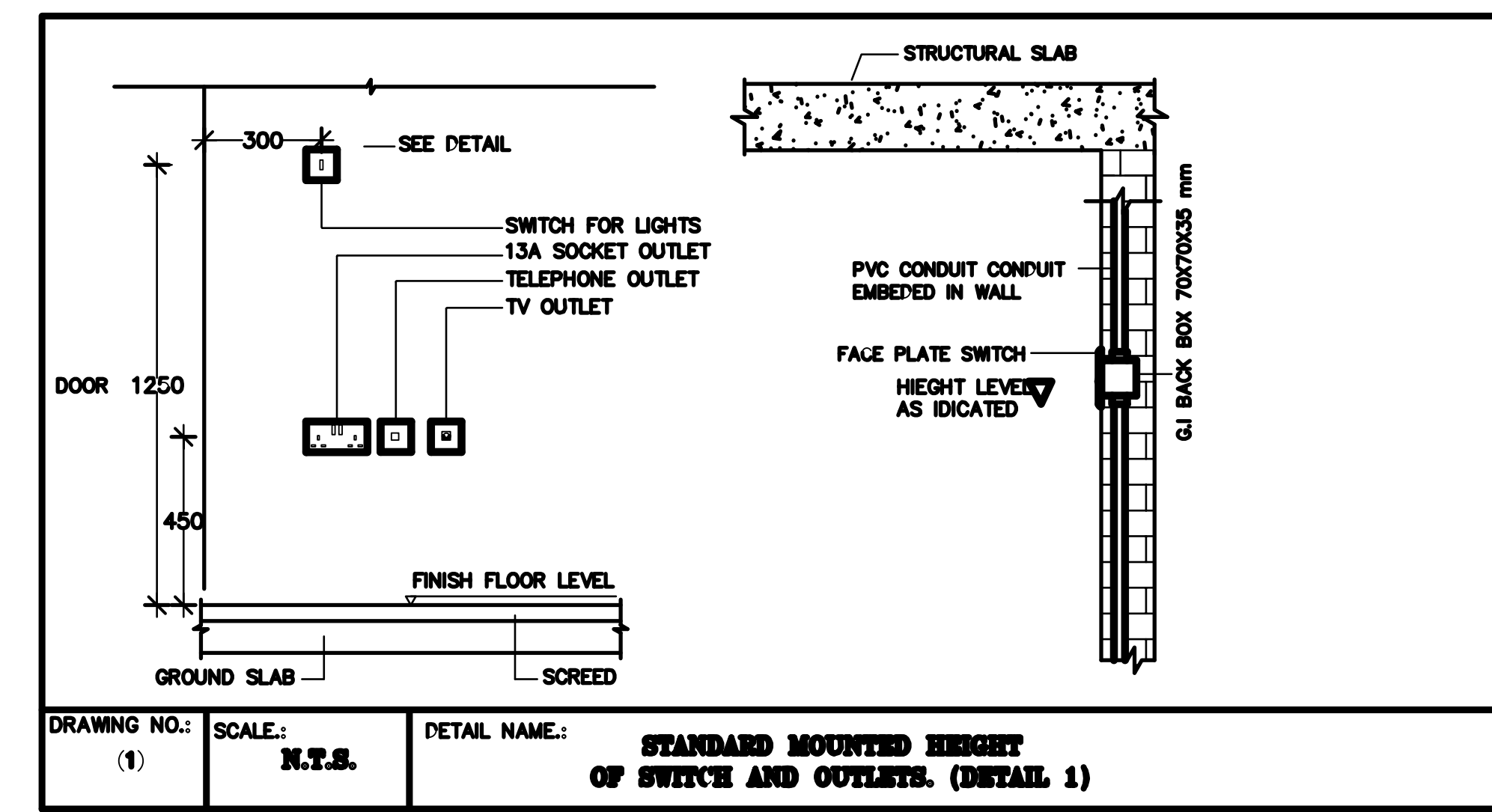
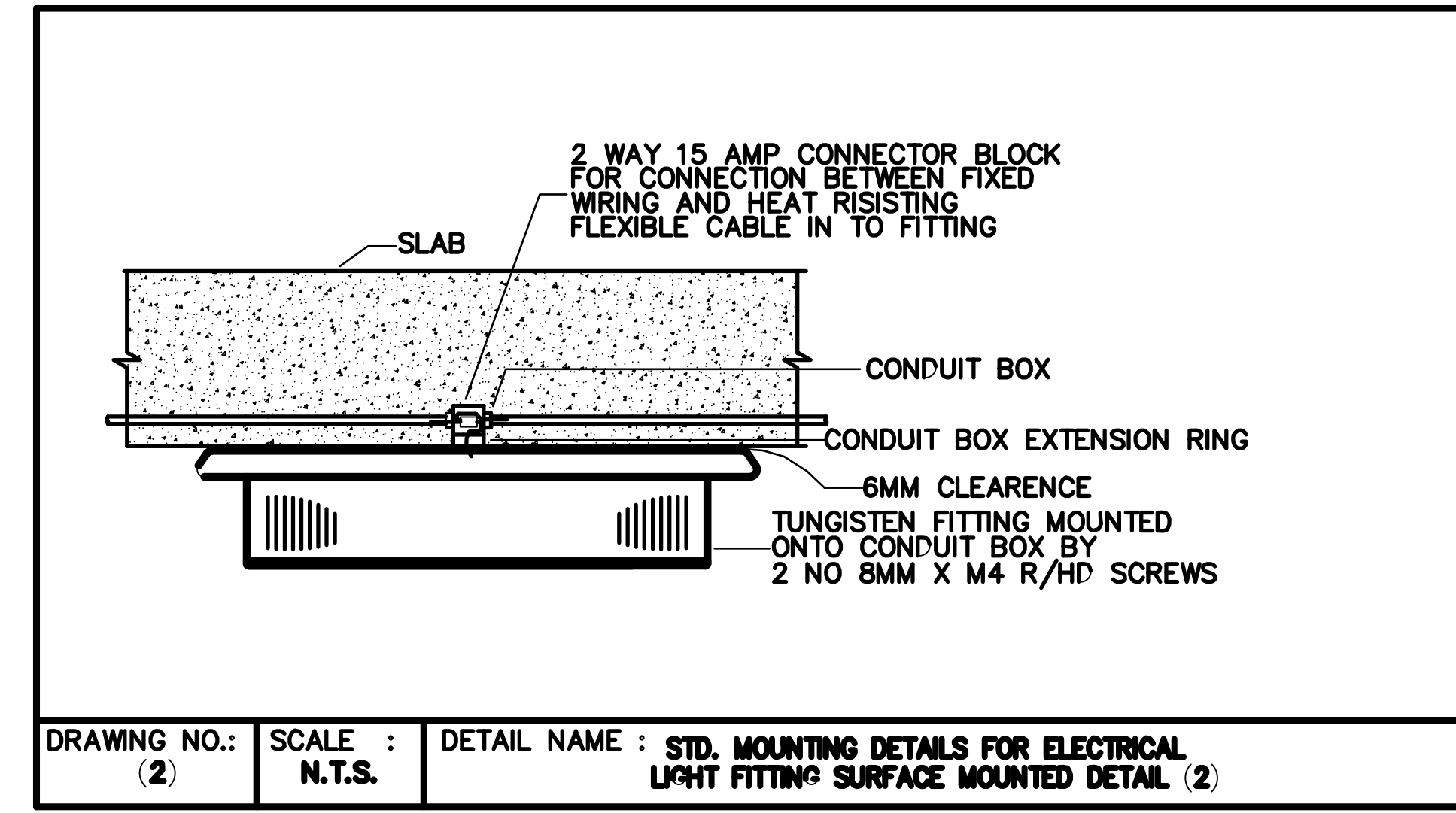
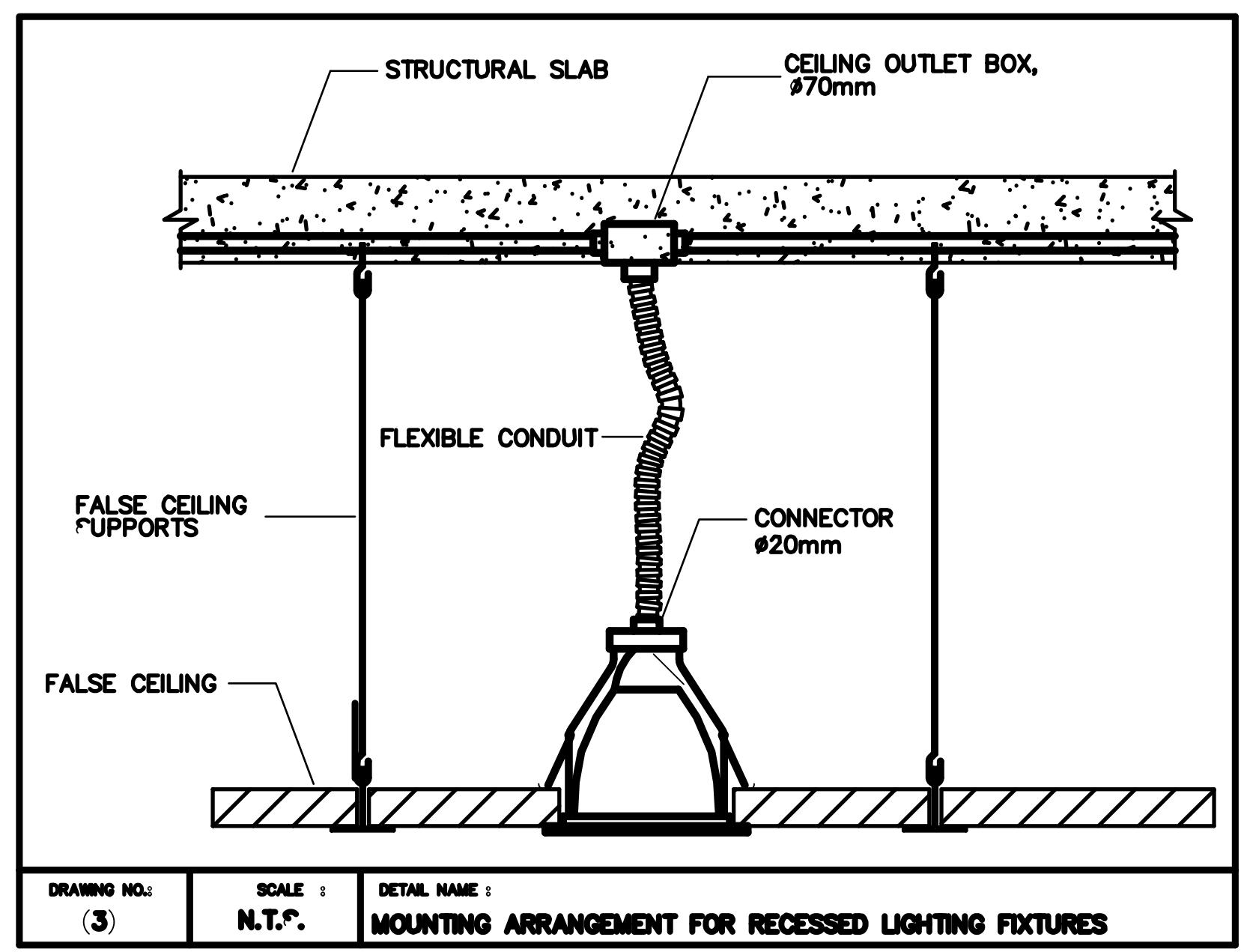
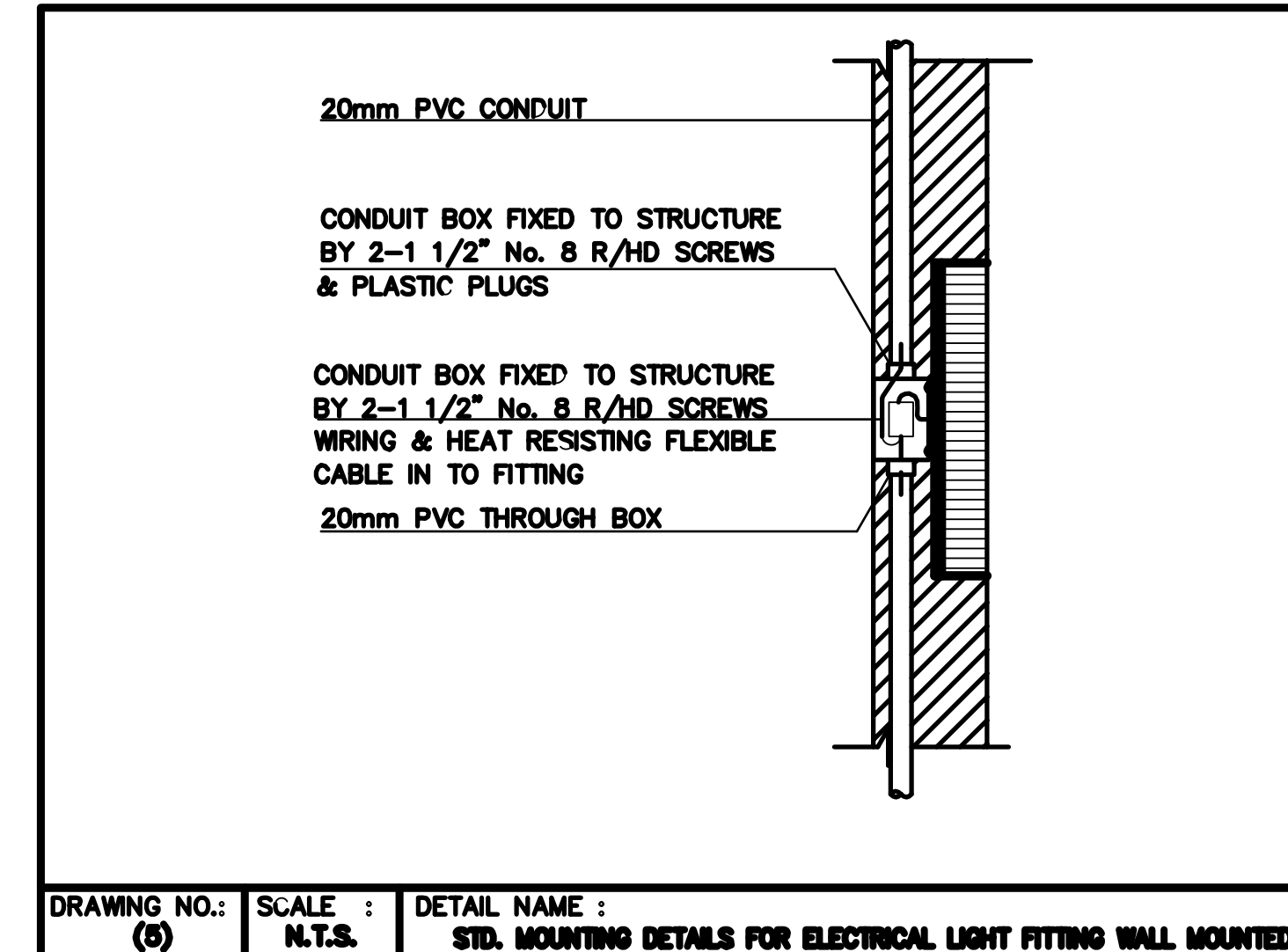


DB REF. & LOCATION		DB-1F-LL (FIRST FLOOR)									
FED FROM		REFER TO SCHEMATIC DIAGRAM									
FEEDER SIZE		REFER TO SCHEMATIC DIAGRAM									
* ELCB 30mA SENSITIVITY.											
WAY No.	PHASE BREAK COLOR SIZE	DESCRIPTION	LOCATION	TYPE OF LOAD	WIRE SIZE	TYPE OF CABLE	CONTA. RATE (Amp)	CONTA. REF. No.	PHASE LOAD ES	PHASE LOAD Y	PHASE LOAD B
1	R 10	8x100	PARK AREA	LTG	3x2.5	PVC	16	C1	800		
	Y 10	5x100	PARK AREA	LTG	3x2.5	PVC	16	C2	500		
	B 16	12x100	DRIVE WAY	LTG	3x2.5	PVC	16	C3		500	1200
2	R 10	14x100	DRIVE WAY	LTG	3x2.5	PVC	16	C4	1400		
	Y 10	6x100	PARK AREA	LTG	3x2.5	PVC	16	C5	600		
	B 10	6x100	PARK AREA	LTG	3x2.5	PVC	16	C6		600	
3	R 10	11x100	LIFT LOBBY	LTG	3x2.5	PVC	16	C7	1100		
	Y 10*	5x100	STORE+TELECOM	LTG	3x2.5	PVC	16	C8	500		
	B 10	4x100	STORE+ELECT	LTG	3x2.5	PVC	16	C9		400	
4	R 10	7x100	AHU ROOM	LTG	3x2.5	PVC	16	C10	700		
	Y 16	14x100	LIFT LOBBY	LTG	3x2.5	PVC	16	C11	1400		
	B 16	11x100	LIFT LOBBY FLASHER	RSD	3x2.5	PVC	16	C12		500	
5	R 30*	2x100	DRIVE WAY	RSD	4x4+2x2.5	PVC	16	C13	200		
	Y 6	1x200	CCTV	G.P	3x2.5	PVC	16	C14		200	
	B 6	1x200	CCTV	G.P	3x2.5	PVC	16	C15		200	
6	R 30*	5x100	AHU ROOM	RSD	4x4+2x2.5	PVC	16	C16	500		
	Y 30*	8x100	TELECOM	RSD	4x4+2x2.5	PVC	16	C17		800	
	B 30*	3x100	LIFT LOBBY	RSD	4x4+2x2.5	PVC	16	C18		300	
7	R 30*	5x100	ELECTRIC ROOM+STORE	RSD	4x4+2x2.5	PVC	16	C19	500		
	Y 30*	2x100	STORE	RSD	4x4+2x2.5	PVC	16	C20	200		
	B 10	FCU-T1	STORE	FCU	3x2.5	PVC	16	C21		750	
8	R 6	1x200	DRIVE WAY CCTV	G.P	3x2.5	PVC	16	C22	200		
	Y 6	1x200	DRIVE WAY CCTV	G.P	3x2.5	PVC	16	C23	200		
	B 10	9x100	RAMP	LTG	3x2.5	PVC	16	C24		900	
9	R 10	9x100	RAMP	LTG	3x2.5	PVC	16	C25	900		
	Y 10	7x100	RAMP	LTG	3x2.5	PVC	16	C26		700	
	B 30*	SPARE									
10	R 30*	SPARE									
	Y 30*	SPARE									
	B 30*	6x100	DRIVE WAY	RSD	4x4+2x2.5	PVC	16	C27		600	
R		SPACE									
11	Y 30	A/C	AHU ROOM	A/C	3x6	PVC	16	C28		3000	
	B 30	A/C	AHU ROOM	A/C	3x6	PVC	16	C29		3000	
R		SPACE									
Y		SPACE									
B		SPACE									
R		SPACE									
Y		SPACE									
B		SPACE									
R		SPACE									
Y		SPACE									
B		SPACE									
R		SPACE									
Y		SPACE									
B		SPACE									
LOAD BREAKDOWN											
A/C	W/H	COOKER	LIGHTING	GENERAL POWER	SUB-TOTAL	6300	8100	7950			
6750	W	W	W	11700	W	4400	W	T.C.L. (W)=	22950	W	
6750	W	W	W	9360	W	3120	W	M.D.L.(W)=	19230	W	

	DISTRIBUTION BOARD FP-FEEDER PILLAR-METAL ENCLOSURE-IP-65
	8W, TUBULAR FLUORESCENT, EMERGENCY LIGHTTYPE, SURFACE MOUNTED TYPE, ELECTRONIC BALLAST ADDRESSABLE MODULE, COMPATIBLE WITH CENTRAL BATTERY SYSTEM.
	2x18W, FLUORESCENT FIXTURE, SURFACE MOUNTED ORAL DIFFUSER, WITH HF ELECTRONIC BALLAST, IP40, SIMILAR TO PHILLIPS HOLLAND PART No. TCS-097-1XTLD 30W-HF.
	2x36W, FLUORESCENT FIXTURE, SURFACE MOUNTED, BODY MADE FROM INJECTION MOULDED POLYCARBONATE & POLYCARBONATE DIFFUSER, WITH HF ELECTRONIC BALLAST, IP65, SIMILAR TO DISANO / ITALY Cat. No. 931 ECHO, CEL-F / FL 2x36.
	36 W, COMPACT FLUORESCENT LIGHT, WALL MOUNTING LIGHTING FIXTURE, WITH DIE CAST ALUMINIUM HOUSING AND SAND PLASTED GLASS DIFFUSER, IP95, SIMILAR TO SIMES / ITALY Cat. No. S.6779.
	10W, COMPACT FLUORESCENT RECESSED MOUNTED, EMERGENCY DOWN LIGHT ELECTRONIC BALLAST AND ADDRESSABLE MONITORING MODULE COMPATIBLE WITH CENTRAL BATTERY SYSTEM COMPLETE WITH GLASS DIFFUSER.
	2x26W, COMPACT FLUORESCENT, DOWN LIGHT, RECESSED IN FALSE CEILING WITH SUPER PURE REFLECTOR AND FLUSH GLASS DIFFUSER, SIMILAR TO TARGETH / ITALY, Cat. No. CCT-47320.
	63A PLUG IN TAP OFF UNIT
	8W, T5 FLUORESCENT LIGHT, WALL / PENDANT MOUNTED SEMI-RECESSED IN FALSE CEILING (ALL AS APPLICABLE), COMPLETE WITH PICTORAM LEGENDS LUMINAIRE ENCLOSURE MADE FROM POLYCARBONATE, MAINTAINED MODE, COMPLETE WITH ADDRESSABLE HF BALLAST SUITABLE FOR CENTRAL BATTERY OPERATION, WEATHER PROOF (WHERE APPLICABLE), SIMILAR TO CEAG / GERMANY
	1 GANG ONE WAY SWITCH D : FOR DIMMER WP : WEATHER PROOF C : METAL CLAD



DB REF. & LOCATION		EDB-CB2 (GROUND FLOOR)									
FED FROM		REFER TO SCHEMATIC DIAGRAM									
FEEDER SIZE		REFER TO SCHEMATIC DIAGRAM									
* ELCB 30mA SENSITIVITY.											
WAY No.	PHASE BREAK COLOR SIZE	DESCRIPTION	LOCATION	TYPE OF LOAD	WIRE SIZE	TYPE OF CABLE	CONTA. RATE (Amp)	CONTA. REF. No.	PHASE LOAD ES	PHASE LOAD Y	PHASE LOAD B
1	R 10	12x10	DRIVE WAY (G.FLOOR)	LTG	3x2.5	MICC	16		1200		
	R 10	10x10	ENTRANCE HALL (G.FLOOR)	LTG	3x2.5	MICC	16		100		
	R 10	11x10	LIFT LOBBY (G.FLOOR)	LTG	3x2.5	MICC	16		110		
4	R 10	8x10	HV AND TX ROOM (G.FLOOR)	LTG	3x2.5	MICC	16		80		
	R 10	6x10	STAIR	LTG	3x2.5	MICC	16		60		
	R 10	4x10	STAIR	LTG	3x2.5	MICC	16		40		
7	R 10	15x10	DRIVE WAY	LTG	3x2.5	MICC	16		150		
	R 10	10x10	DRIVE WAY (F.FLOOR)	LTG	3x2.5	MICC	16		100		
	R 10	11x10	LIFT LOBBY (F.FLOOR)	LTG	3x2.5	MICC	16		100		
10	R 10	6x100	ENTRANCE (G.FLOOR)	LTG	3x2.5	MICC	16		60		
	R 10	6x100	ENTRANCE (G.FLOOR)	LTG	3x2.5	MICC	16		60		
	R 10	SPARE									
LOAD BREAKDOWN											
A/C	W/H	COOKER	LIGHTING	GENERAL POWER	SUB-TOTAL	980					
	W	W	W	980	W	W	T.C.L. (W)=	980	Q		
	W	W	W	980	W	W	M.D.L.(W)=	980	Q		



SUB CONTRACTOR:  
T & C QATAR L.L.C. - C.R. 35109  
P.O. Box: 2329 DOHA, QATAR  
TEL: (+974) 4421 833 / 4930 614  
FAX: (+974) 4410 553 / 4930 614



CONSULTANT:  
المكتب العربي الهندسية  
ARAB ENGINEERING BUREAU  
P.O. Box: 2329 DOHA, QATAR  
TEL: (+974) 4421 833 / 4930 614  
FAX: (+974) 4410 553 / 4930 614



DESIGNER:  
GHD  
P.O. Box: 44522 Doha, Qatar  
T: (+974) 4412 277 / 4412 277  
E: dhamad@ghd.com.qa www.ghd.com.qa



MAIN CONTRACTOR:  
AL MADAR CONTRACTING  
P.O. Box: 2329 DOHA, QATAR  
TEL: (+974) 4675405 - 4674466  
FAX: (+974) 4671333 - C.R. : 15061  
WEB SITE: www.almdar-group.com  
Email: conteng@almdar-group.com



OWNER:  
ALI ABDUL REDA MASHHADI

PROJECT:  
AL NOOR OFFICE TOWER AT NEW DOHA  
2B+G+F+22 FLOORS

DRAWING TITLE:  
FIRST FLOOR  
LIGHTING LAYOUT

DRAWING REFERENCE:  
75-10288-E104 - FIRST FLOOR LIGHTING LAYOUT  
75-10288-E000 - LIGHTING LEGEND & NOTE  
75-10288-E401-403 - DISTRIBUTION BOARD DETAILS

DRAWN BY: D. CESARONI

CHECKED BY: M. SHAMIMUDDIN

APPROVED BY: M. MOHAMUD

DATE: 04.07.07

SCALE: 1:100 SIZE: A0

REVISION: 0

DATE: 04.07.07

DRAWING NO.: TC01E3F01026  
SHEET: 1 OF 2